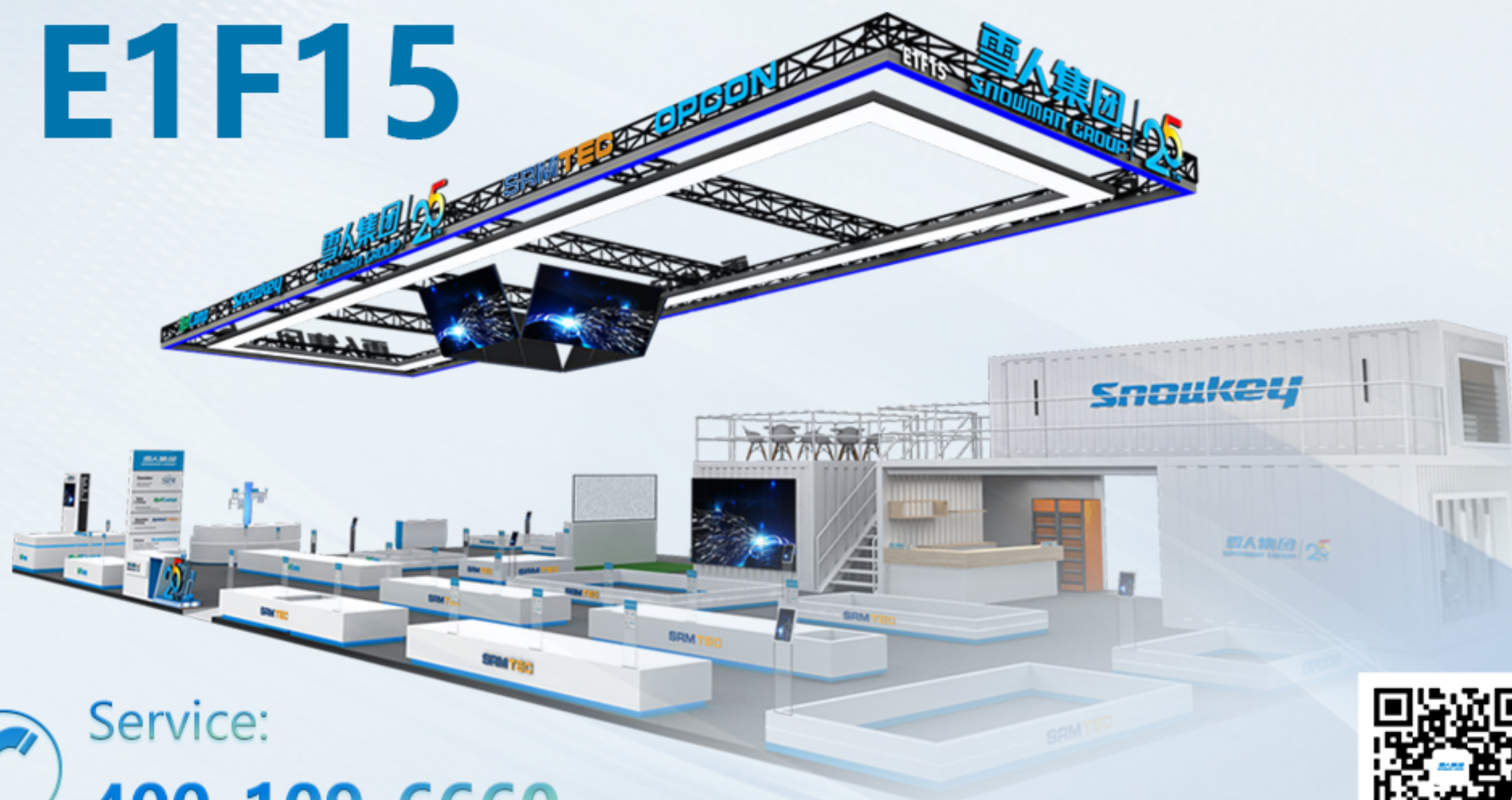


CR 中国制冷展 2025 CHINA REFRIGERATION

THE 36TH INTERNATIONAL EXHIBITION FOR REFRIGERATION,
AIR-CONDITIONING, HEATING AND VENTILATION, FROZEN
FOOD PROCESSING, PACKAGING AND STORAGE

▶▶▶ BOOTH NUMBER

E1F15



Service:

400-109-6660

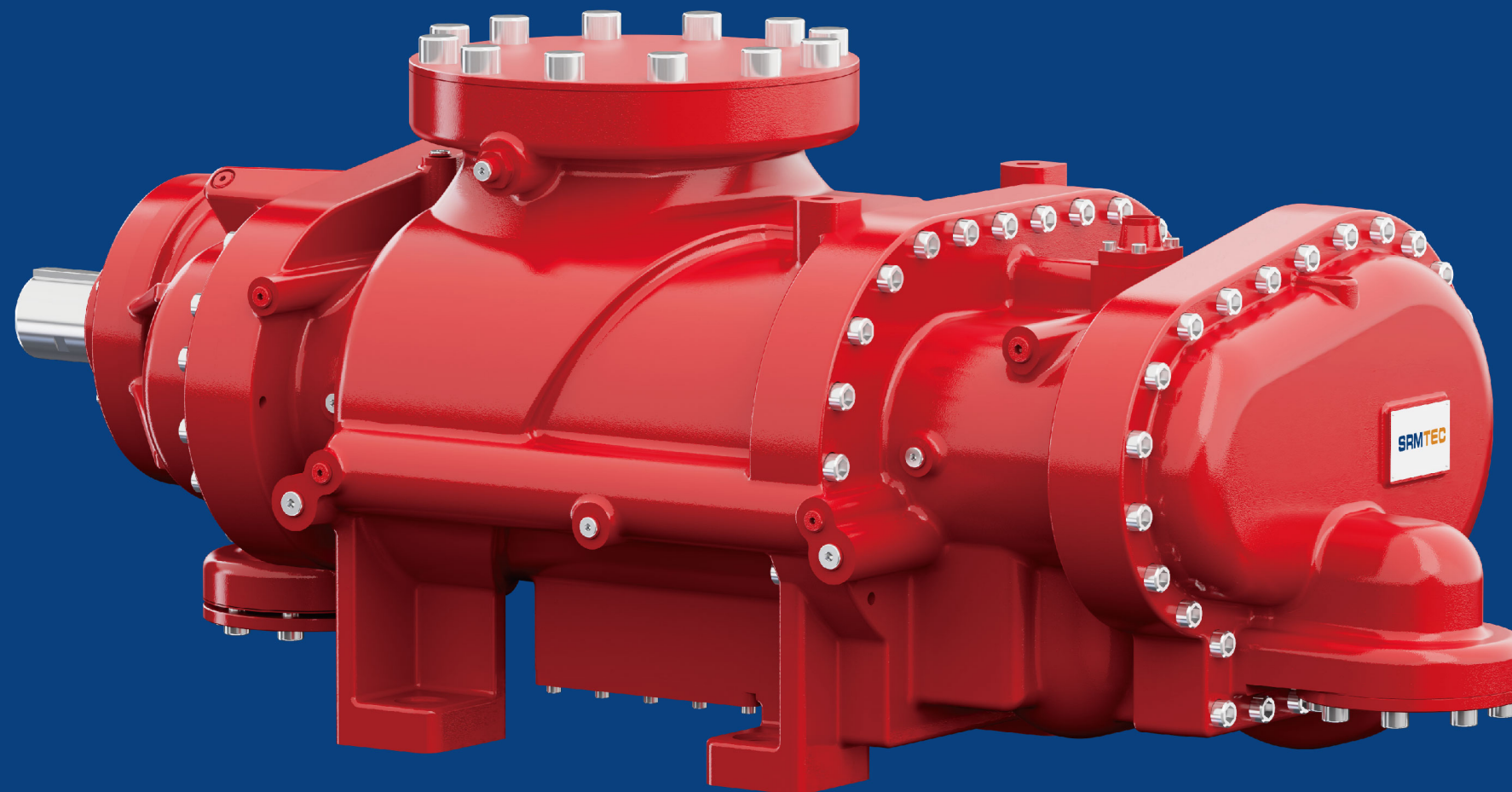


Official Website

SRMTEC

STC-300 Oil-free Screw Steam Compressor

- Optimized SRM rotor profile for steam compression.
- Multipoint spray structure increases performance.
- Screw contact-free engagement to achieve oil-free operation.
- Corrosion-resistant body ensures stability and steam cleanliness.
- Precision bearing loads rotor high-speed and stable operation.
- Bearing life up to 100 000 hours.



Service:

400-109-6660

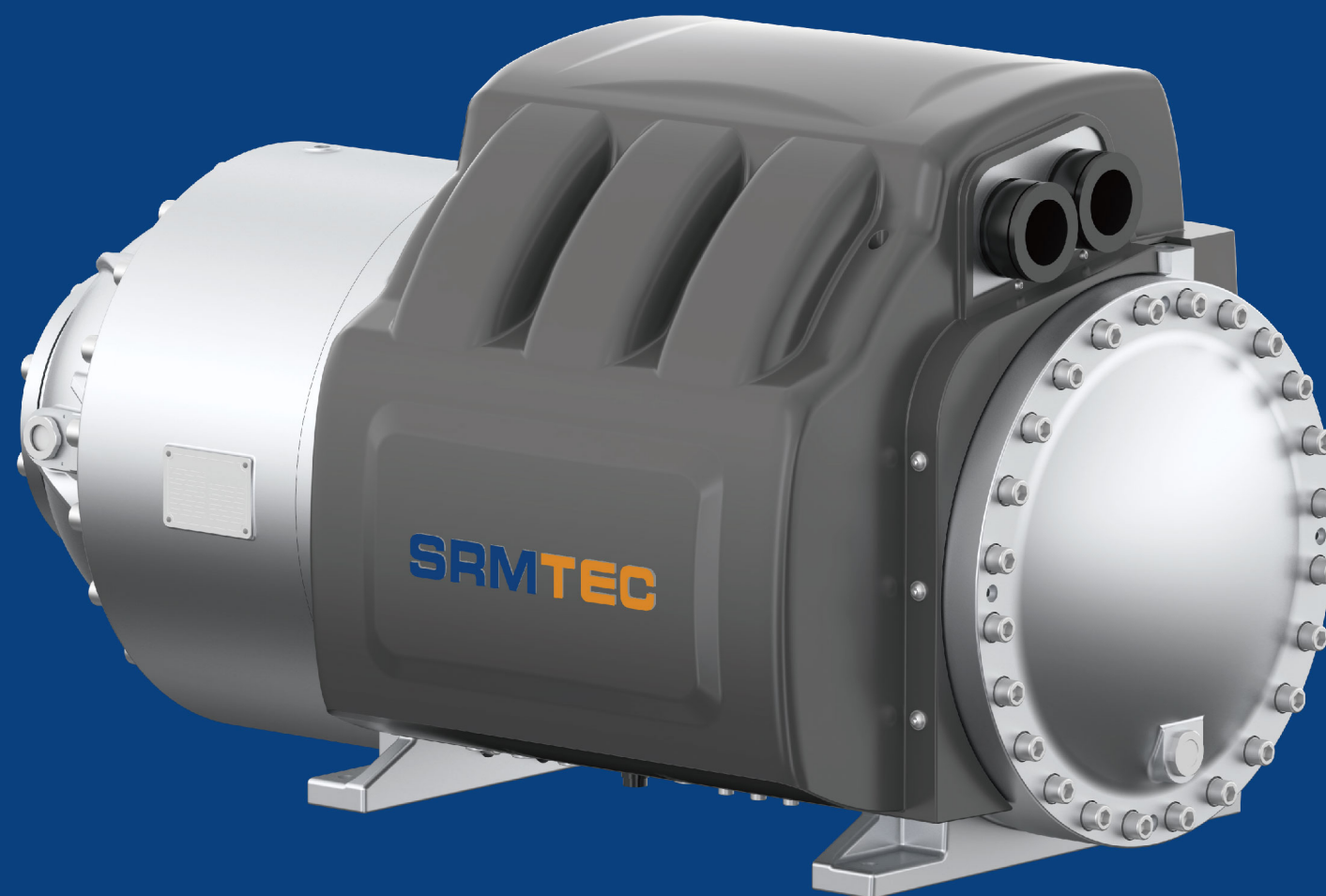


Official Website

SRMTEC

SCM-F6DS High Pressure Ratio Maglev Centrifugal Compressor

- High pressure ratio design meet the demand of customer application.
- Two-stage ternary impeller adopted leadingly high-performance pneumatic flow channel.
- Industrial grade active magnetic bearing (AMB) provides excellent stability and deflection correction ability.
- Micron level position control accuracy and dynamic scanning and adjustment of over 20kHz.
- IGV+FVD for wider operating range and higher energy efficiency.
- Multiple protection from self-generating technology and vibration-absorbing auxiliary bearing ensures safe operation under adverse conditions.



Service:

400-109-6660



Official Website

SRMTEC

SRS-C-17S Semi-hermetic Ammonia Compact Screw Compressor

- Cutting-edge medium and high temperature rotor profile.
- Integrated design of rotor chamber and motor chamber for satisfactory rigidity and coaxiality.
- Integrated design of oil separator and compressor, providing high oil separation efficiency and a compact compressor structure.
- Adaptive Vi control fully automatic, achieving efficient operation.
- Automatic rotor oil injection control, ensuring lubrication and improving compressor efficiency.
- High-efficiency permanent magnet synchronous motor, improving energy efficiency.
- Liquid injection/spray cooling of motors is available to expand the operating limits.



Service:

400-109-6660

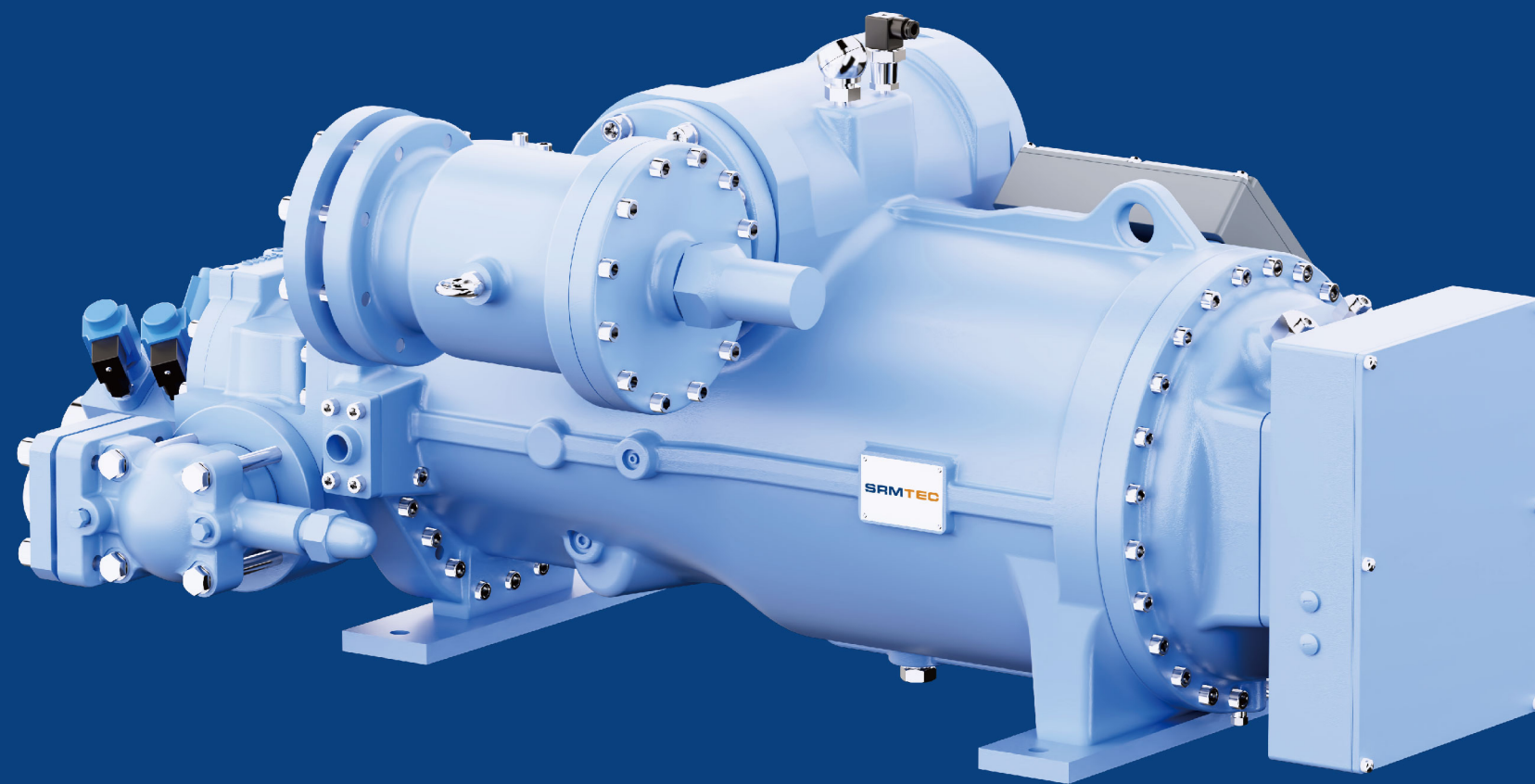


Official Website

SRMTEC

SRS-I-16L Semi-hermetic Ammonia Screw Compressor

- Dedicated rotor profile designed for ammonia under low and medium temperature working conditions with SRM's expertise.
- Oil cooling design for drive motor, improving energy utilization efficiency.
- Intermediate bi-directional intake mechanism for dual-system.
- Dual-channel high-flow economizer port, coupled with low-pressure differential economizer injection technology,, improving overall efficiency.
- Built-in oil circuit and external oil cooler interface for easy installation and wider adjustable oil heat load range.
- High-efficiency permanent magnet synchronous motor, achieving higher overall efficiency than asynchronous motor.



Service:

400-109-6660

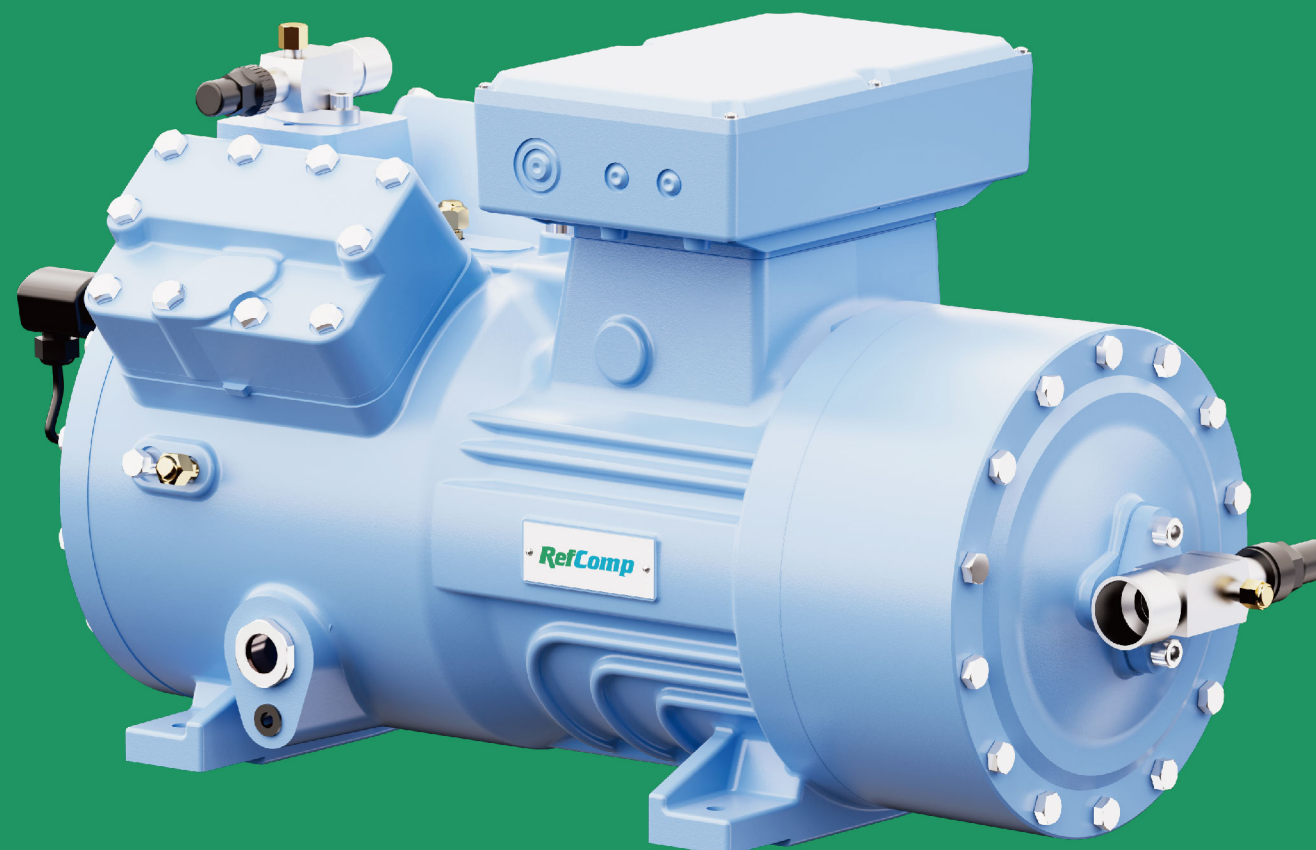


Official Website

RefComp

SPS42-48 Semi-hermetic Subcritical CO₂ Reciprocating Compressor

- High quality casting grade, metal sealing gasket, high-strength bolt fastening assembly.
- Balanced crankshaft designed based on rotor dynamics, ensuring rigidity and reducing vibration.
- Composite crankshaft bushing with cutting-edge design, achieving low noise, high wear resistance , large bushing capacity and long service life.
- Cylinder honed by special process, ensuring long service life and low power consumption.
- High-efficiency PW motor with low starting current and high energy efficiency.
- Integrated INT69 motor protection module with dynamic monitoring, ensuring safe operation.
- Oil return valve is installed between the motor housing and the crankcase, avoiding oil accumulation inside the motor, ensuring oil balance.



Service:

400-109-6660



Official Website

RefComp

SP4L2500EX Explosion-proof Semi-hermetic Reciprocating Compressor

- Explosion-proof rating of IIC, suitable for explosive gases in IIC T4 group environments.
- All electrical equipment (such as electric heaters, solenoid valves) are explosion-proof type, enhancing the safety of the compressor.
- Reinforced oil sight glass, providing oil circuit visualization while ensuring explosion-proof performance.
- Zener safety barriers are used for electrical isolation, effectively preventing the generation of sparks in electrical equipment.
- Special treated explosion-proof terminal boxes and terminal boards to ensure stable operation of internal electrical components.



Service:

400-109-6660

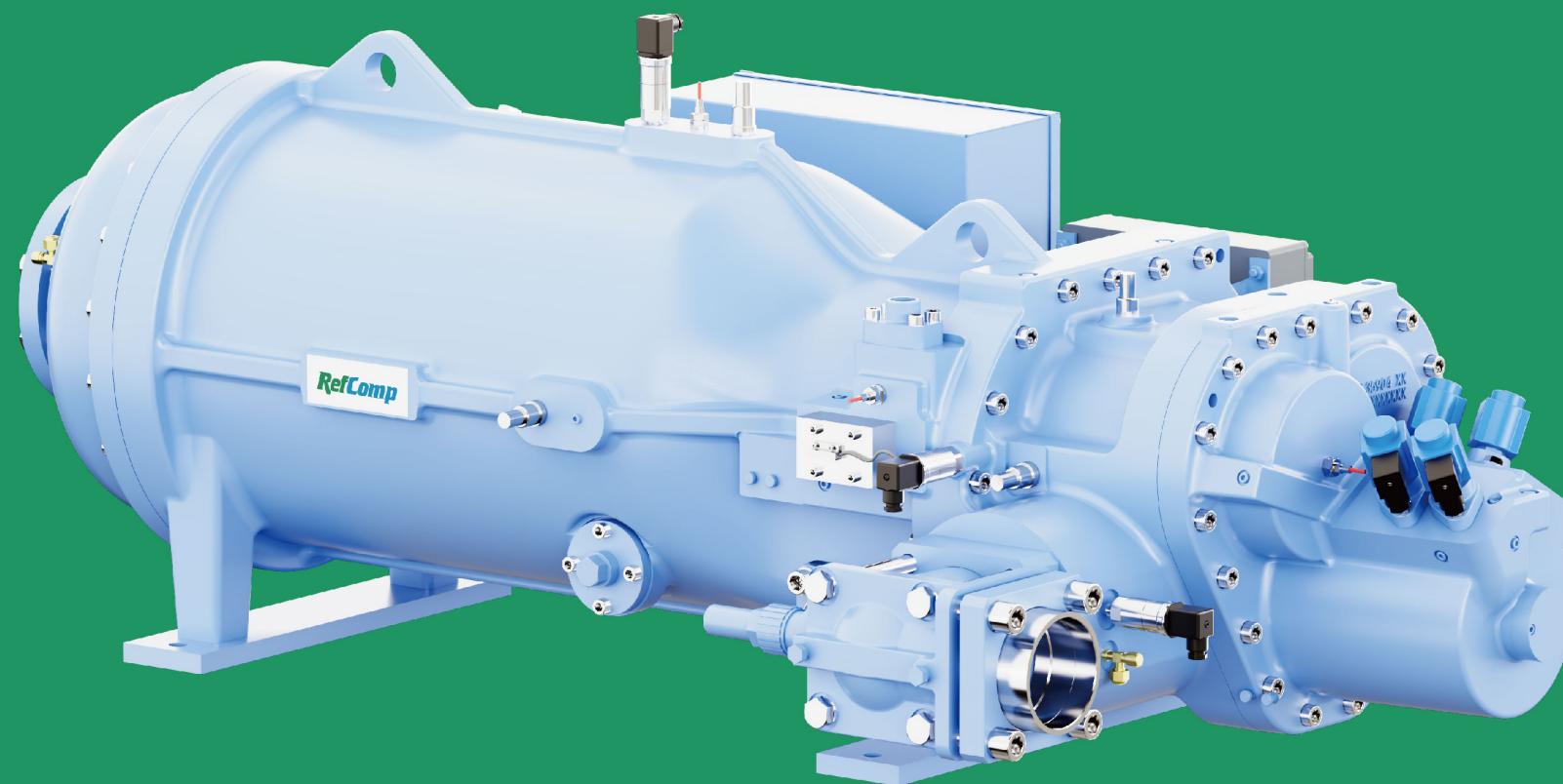


Official Website

RefComp

SW5L300 Semi-hermetic Screw Compressor

- Cutting-edge rotor profile technology adopted from SRM, effectively enhancing cooling efficiency.
- Highly integrated temperature and pressure sensors, oil flow switch, and other components, effectively improving operation reliability.
- Built-in oil circuit with external oil cooler interface for easy installation and a wider range of oil heat load control.
- Automatic oil injection control system, which expands the range of applications and improves compression efficiency.
- Adjustable Vi with manual or automatic control, effectively improving efficiency under various working conditions.
- AICM module is available to achieve intelligent control and operation.



Service:

400-109-6660

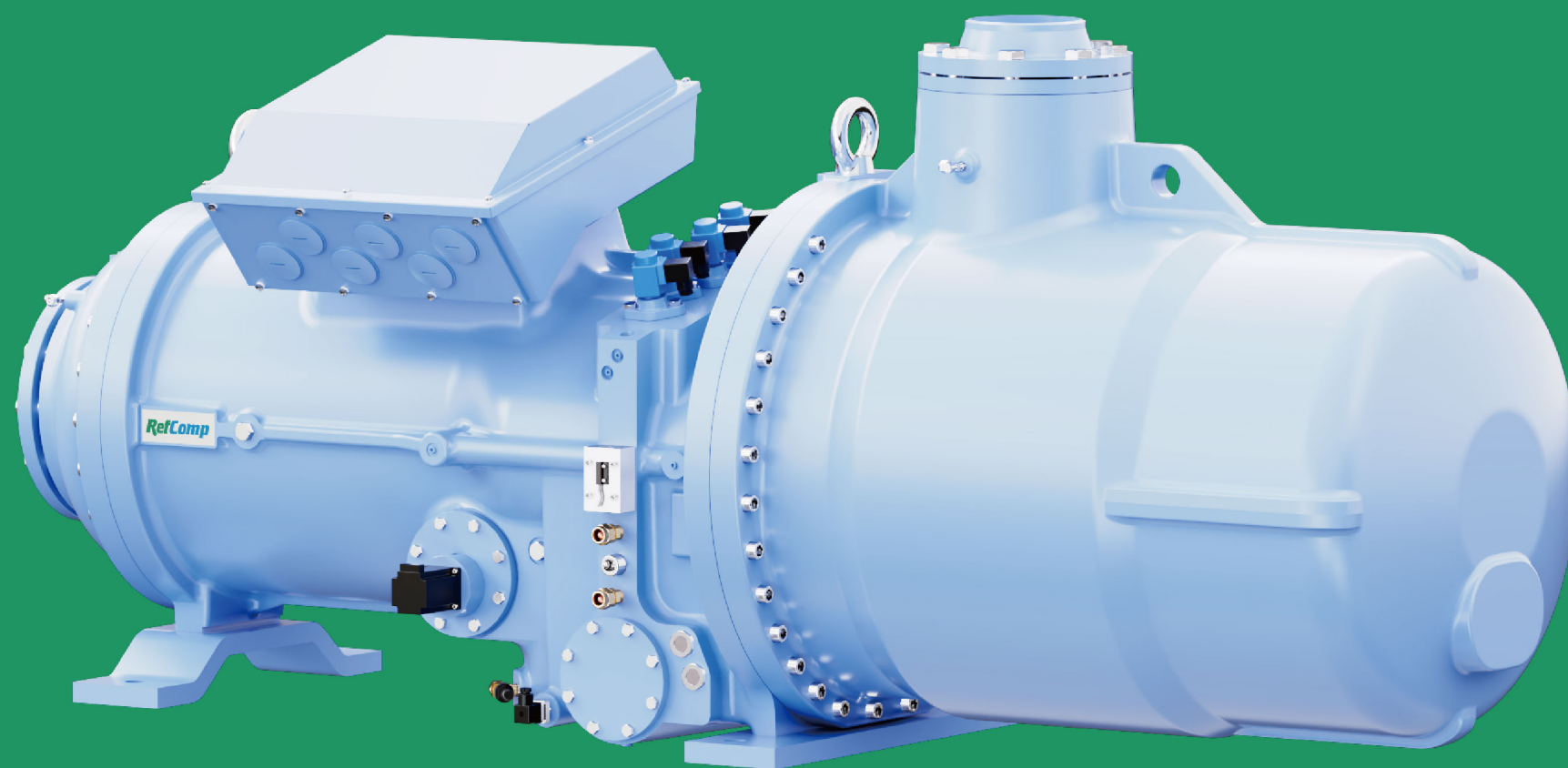


Official Website

RefComp

SS5F10400 Semi-hermetic Compact Screw Compressor

- Global leading ultra-high capacity semi-hermetic screw compressor.
- Cutting-edge medium and high temperature rotor profile, achieving international leading efficiency level.
- Automatic rotor oil injection control, regulating oil flow based on real-time temperature, ensuring lubrication and improving compressor efficiency.
- Adaptive Vi control fully automatic, achieve efficient operation, low noise, low energy consumption.
- Integrated design of oil separator and compressor, providing high oil separation efficiency and a compact compressor structure.
- Applicable to low temperature and A/C working conditions, with variable frequency motor available, offering excellent overall performance.



Service:

400-109-6660



Official Website